

LOCAL WATCH-WORD



The Newsletter of the Eastleigh Neighbourhood Watch Association keeping you up to date with crime and safety issues in your area

Mar 2023

STAYING WARM THIS WINTER

In our last issue we covered the provision of Warm Welcome venues locally, and how these could be suggested as destinations for vulnerable residents in our schemes. Since it is still cold for a month or so and fuel prices are still sky high, we thought it worthwhile reminding readers of the Heat Hub options and how to find the nearest one to you and your neighbours.

The easiest option is to go to www.warmwelcome.uk and click on the 'Find a space' button. This will take you to a box where you can enter your post code, to see what is available close to you. Clicking on a red pin on the map will show you details of the facilities available at each venue, some of which include hot drinks, accessible toilets, free Wi-Fi, etc.

These venues are warm and welcoming places for residents who need a place with free entry to meet up with friends, take part in activities and just be, without switching on the heating at home.

It doesn't matter why you need to visit and no record will be taken. Everyone is welcome to these safe spaces where you will be treated with dignity and respect.

If you or one of your neighbours is feeling awkward about going to a designated Heat Hub, then it may be worth considering going to the local library, as these will also provide a warm environment to spend a pleasant day reading in, and are also part of the scheme. With



Quarterly Tip

**Think before you link.
Don't click links in emails
without checking the source.**

many libraries under threat of closure this should strengthen their chances of survival by keeping them busy.

With some families having to make the choice between heating or food, the Warm Welcome scheme may make all the difference on a day to day basis. As a word of advice, although it might be tempting, it is very unwise to turn off the heating altogether, as you could run the risk of freezing pipes with the subsequent risk of bursts and flooding. By turning it right down, considerable savings can be made.

Even if you are coping OK, it is worth looking out for your neighbours, particularly as they may not want to admit they are struggling. Neighbourhood Watch is not just about crime prevention, but also about watching out for your community. Maybe invite a potentially vulnerable neighbour round for a chat, a cup of tea and some cake. They may not be cold,

but they may be lonely and that contact could make their day. Specific financial advice can be found on the Connect to Support Hampshire site where contact details for things such as help with food, money worries and mental health, repair cafes, short-term grants and much more.

CONTENTS	
1	Warm Hubs
1	Quarterly Tip
2	Chairman's Note
2	Corben's Corner
3	Alert
3	Check Links
3	Keyless Cars
4	Rip Off Britain
4	Theft From Cars

A Note From Our Chairman

Mike Anthony



other crimes or suspicious events to the police by calling 101 or using online reporting at www.hampshire.police.uk.

You should also have seen recently that National NW has been busy producing **Welcome Packs** for Members and Coordinators. New members of schemes registered on Alert will receive a pack automatically in future. Coordinators can send a copy to those not on Alert by accessing the 'welcome pack' on the Our Watch website. Similarly the new Coordinator 'welcome pack' will be made available when a new scheme coordinator is confirmed by ENWA, following vetting. I'm pleased to say that a process has now been agreed whereby local police sergeants can once again conduct a light 'vet' for us, avoiding a need for a formal vet by the Vetting Unit.

INCIDENT REPORTS

You may have noticed that we have not been sending out crime Incident Reports since the start of Covid - because of access restrictions to police stations. However, I'm pleased to say that we've started distributing Incident Reports for Eastleigh areas once again - a police volunteer who does this for Portsmouth has kindly offered to do them for us. If you find these useful (or not) please let us know. Please encourage your neighbours to report any information on these incidents (quoting the ref. no.) or any

PROJECT EDWARD

(Every Day Without A Road Death) is the biggest platform for promoting good practice in road safety in the UK. It is backed by government, the emergency services, highways agencies, road safety organisations and British businesses. This year the theme for the 2023 Week of Action is 'Safer Mobility - Everyone's Responsibility'. The Project EDWARD week of action will take place from Monday 15th to Friday 19th May.

Watch out for Daily Broadcasts each evening on the Project Edward website as well as a series of Webinars.

DATES WITH MICA

PCSO Mica Woodcock is starting Beat Surgeries / Meets for Hedge End North and West End and invites local residents to come and talk to her face to face.



Lots more information can be found on our ENWA website

www.eastleighnhw.org.uk/

and also take a look at our [Facebook](#) page



March dates are Sunday 5th March 10-11am & Thursday 16th March 7-8pm at the Old Fire Station, SO30 3FB (on the corner of High Street and Orchards Way, West End).

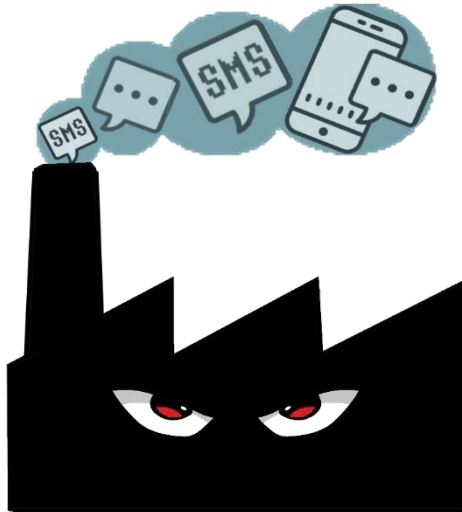
If you live in the area, please go along and say 'hi'. Feel free to raise any issues that you may have relating to your local area. She will also have stickers, colouring sheets and a 'spot the difference' for children. Our ENWA Area Coordinators (Michael Bliss and Annie Scott) also plan to support these dates. Go along and meet them too.

Corben's Corner

By John Corben

I expect none of you have heard about SMS Factories. Well, quite simply, a small piece of software installed on a scammer's computer allows them to 'spray out' thousands of scam emails to potential victims in an attempt to carry out their evil intent. The scammer only has to be successful, say 1 in 250 attempts. However, we have to be vigilant every single time. SMS factory software is not controlled or restricted by the software developers (nor can it be), as it can be used for legitimate reasons by companies, as well as by the scammers for their scamming purposes.

I mentioned in the last WatchWord that scam attempts are becoming more sophisticated. This was recently confirmed by the National Cyber-Crime Security Centre (GCHQ). Are they reading our bulletins, I wonder? An example of this has happened to me twice recently. I received phone calls on my landline from an 02380 number. As I live in Chandlers Ford, I mistakenly



believed that these calls were genuine. However, on both occasions I heard a pre-recorded message from 'the bank' explaining that suspicious transactions had been detected on my account. It asked me to press button one to be connected to a security operative, who would 'assist' me. The scammers were call number spoofing my local exchange number to lend a degree of credibility to their scam attempts.

The recent earthquake disaster in Turkey/Syria has understandably resulted in an outpouring of support in help for those suffering and has raised many tens of millions of pounds in donations. It took only two day for scammers to cash in on this. They were wanting you to support them and have set up hundreds of fake disaster relief accounts to take your money. Please be extra vigilant if donating to ensure your money is going to a legitimate support agency.



BE ALERT, JOIN ALERT



HAMPSHIRE & ISLE OF WIGHT
CONSTABULARY

HAMPSHIRE ALERT

Lets you know what's happening in your community

As a local resident, you can play a key role in helping us to prevent and detect crime and anti-social behaviour.

Improving the flow of information between the local community and the police is vital to achieving our aim to work together to deter criminals.

By signing up to Hampshire Alerts, you will receive timely updates covering crime prevention advice, crime alerts and witness appeals for incidents in the local community. It is your way of being kept informed of what we're doing in the community, allowing us to keep the communities of Eastleigh and Hedge End safe.

[Click here](#) to sign-up to receive regular Hampshire Alerts

LINK CHECKING



Sometimes a link can be shortened to make it easier to remember or to simplify a very long, complicated URL. However, this can also be used to disguise to origin of a dodgy site and encourage you to click it. In order to get a better idea of where a shortened link may be taking you, you can use www.expandurl.net. Just copy and paste the suspect short link into the box and click 'expand link' to find out more about the destination.

BEWARE OF RELAY KEYLESS CAR THEFT

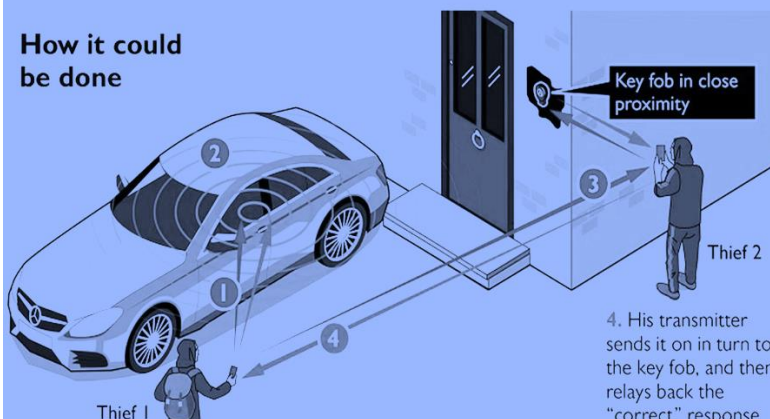
High tech thieves are now targeting keyless cars in order to steal them. Hundreds of popular cars, including four of the five best-selling models in the UK, are susceptible to 'keyless theft'

Keyless entry cars allow the driver to unlock and start the car with the key fob still in their pocket. Once in the car, the driver can press a button to start the engine.

Is My Car Keyless Entry? If you have to push a button on your car keys to enter your car, you are **not** at risk of being "hacked". Only cars with a keyless entry system can be stolen using so called 'relay' equipment.

What Can I Do To Protect My Car? The easiest precaution is not to leave your car keys near the front door. Depending on the remote however, (the range can be between 5 and 20 metres), if yours is at the further end of the scale, it may still be able to communicate with the thieves' equipment. A more secure option is to use a Faraday pouch or box. These are specially designed to prevent radio frequency signals from getting in or out. They can be purchased from as little as £5 from motoring stores or on online. The pouches can also be useful for protecting credit and debit cards.

How it could be done



BBC RIP OFF BRITAIN SCAM ADVICE

SCAM TEXT MESSAGE ADVICE

RIP-OFF BRITAIN

Rip Off Britain's tech expert David McClelland and solicitor Gary Rycroft have put together this handy guide to help you avoid falling victim to fraudsters...

How can I tell a scam text from a genuine text message?

- Don't panic!
- It's natural to think you have to reply straight away, but think about it first
- Take some time to look at the message closely.



Gary says...

"The key message is to be really suspicious about any message that you get out of the blue."

A good place to start is looking for the following signs that indicate the message may be a scam:



- Unknown numbers
- Requests for payment or payment details
- 'Urgent' requests
- Carefully examine website links & check for any characters out of place
- Spelling or grammatical errors



David says

"A number of legitimate companies are now not including links in messages they send to their customers"

- Fraudsters are finding ways around some of these indicators, including 'spoofing'. This is where fraudsters use identity masking technology to change the name or number that is displayed as the sender. This can make it look like the text has come from your bank's number or from an organisation like 'NHS' or 'GOV UK'. So even if it looks like the text has come from a legitimate source, you still need to take it with a pinch of salt!
- If in doubt, contact the company or organisation you think sent the text and ask if it's genuine. Look online for a number for them – don't try to call the number the text came from.
- Some organisations and companies have information on their website about how they will contact customers or users.

"REMEMBER... Scams and threats don't just apply to text messages but other messaging services too - such as WhatsApp and Facebook Messenger. Be extra vigilant for the "Hi Mum and Dad" scam message. This is where scammers impersonate your family members, particularly adult children, in order to ask you for money. "Hi Dad, I've broken my phone and I'm using a mate's phone. I need to talk its urgent can you text me on WhatsApp on my new number please."



David says

If you receive a message like this don't be tempted to transfer money immediately, enquire further by asking who specifically it is by name and by calling them or asking for a voice note.

What do I do if it turns out the message is a scam?

- Don't reply to a scam text. It informs the scammers your number is active and you could be bombarded with more scam messages.
- Do not click on any links, even if they look genuine. Clicking a link could result in malware being downloaded onto your phone that compromises your data.
- Do not share personal or banking information.
- You can report the scam text by forwarding it to 7726, which is a free reporting service provided by phone operators. This information can then be used by your provider to investigate the origin of the text message and arrange to block or ban the sender.

I've replied to a scam text, what should I do?

- If you've shared your banking details, you should contact your bank immediately.
- If you've shared your password, change the passwords on any of your accounts which use the same password.
- If you've lost money, tell your bank and report it as a crime to Action Fraud (for England, Wales and Northern Ireland) or Police Scotland (for Scotland)



THEFT FROM VEHICLE CRIME STATISTICALLY SIGNIFICANT

The latest crime statistics report for February suggests that currently one of the most common crimes in our area is 'theft from vehicle'. Just under 60% of the reports this month. It seems that a lot of this is opportunist theft from cars left unlocked overnight. So maybe now is a good time to reiterate police advice on vehicle security.

- When leaving your vehicle, close all windows and lock your car.
- Upon locking your vehicle, test the door to ensure it is actually locked.
- Park your vehicle in an attended car park.
- Look for public car parks approved by the Park Mark scheme.
- When parking at home, use your garage. If you don't have a garage, park in a well-lit area if possible.
- Don't leave anything on display in your vehicle.
- Take all your personal possessions with you.
- Do not hide any valuable items. Take it with you or leave it at home.
- Do not store ownership documents inside the vehicle.

If you would like to read the latest stats go to [February Report](#)

Hampshire & IoW Neighbourhood Watch

These incident reports are produced for us by our team of NW Police volunteers so we can see burglary, theft, vehicle crime & criminal damage incidents in our local areas. The information given to us is strictly limited so we do not compromise future police investigations.

N'Hood	Ref No.	Time	Notes	Type
EASTLEIGH CENTRAL	44230047504 [0]	04/02/2023 07:24	PASSFIELD EASTLEIGH	Burglary Business / Community
EASTLEIGH CENTRAL	44230049760	06/02/2023 00:17	MAGPIE GOSH	Theft of vehicle
EASTLEIGH CENTRAL	44230050347	06/02/2023 18:57	RAIWAY DUTTON LANE	Theft from vehicle
EASTLEIGH CENTRAL	44230050347	06/02/2023 18:57	RAIWAY HENDLER'S FORD	Theft from vehicle
EASTLEIGH CENTRAL	44230050347	06/02/2023 18:57	RAIWAY EASTLEIGH	Theft from vehicle
EASTLEIGH CENTRAL	44230050347	06/02/2023 18:57	RAIWAY EASTLEIGH	Burglary Residential
EASTLEIGH CENTRAL	44230050347	06/02/2023 18:57	RAIWAY EASTLEIGH	Theft from vehicle
EASTLEIGH CENTRAL	44230050347	06/02/2023 18:57	RAIWAY EASTLEIGH	Theft from vehicle
EASTLEIGH CENTRAL	44230050347	06/02/2023 18:57	RAIWAY EASTLEIGH	Theft from vehicle
EASTLEIGH CENTRAL	44230050347	06/02/2023 18:57	RAIWAY EASTLEIGH	Theft from vehicle
EASTLEIGH CENTRAL	44230050347	06/02/2023 18:57	RAIWAY EASTLEIGH	Burglary Residential
EASTLEIGH CENTRAL	44230050347	06/02/2023 18:57	RAIWAY EASTLEIGH	Theft of vehicle
EASTLEIGH CENTRAL	44230050347	06/02/2023 18:57	RAIWAY EASTLEIGH	ASB - Community
EASTLEIGH CENTRAL	44230061417	13/02/2023 18:12	NUTBEEM ROAD, EASTLEIGH	Burglary Residential